



IMPLANT FOR EVERY SITUATION



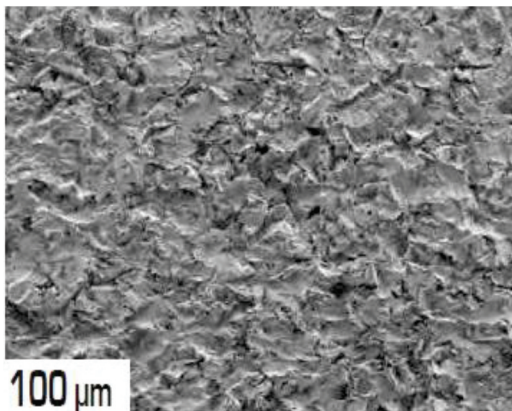
Follow us : [f](#) [@](#) [in](#) [t](#) [v](#)

Welcome to

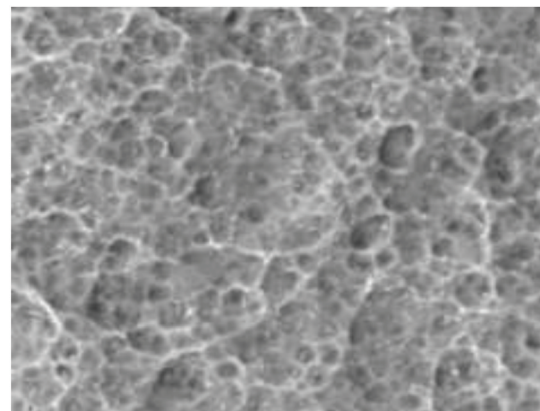
IMPACT IMPLANT SYSTEM

- ❖ **Impact Implant System** is a leading dental implant company serving the industry for more than Three decades.
- ❖ **Impact Implant System** provide a comprehensive solution. Impact's engineers and clinicians have been responsible for many innovation in implant dentistry for years.
- ❖ **Impact Implant System** unique plateau design follows sound bioengineering principles which allow its use in many clinical situation.
- ❖ **Research & Development** : Impact Implant System believe in innovation, we constantly improve our product quality to satisfy our customer's need. We conduct extensive research to give the best for patients smile. Our products are manufacture from Titanium grade V alloy (T1-6AL-4V-ELI)
- ❖ **Customer Service:** Impact Implant System is doing after sales service on top priority, We feel that company is responsible to the patient till the Implant is with the Patient.

I	INNOVATION
M	MOTIVATION
P	PRECISION
A	ADAPTABILITY
C	CUSTOMER CARE
T	TRUST

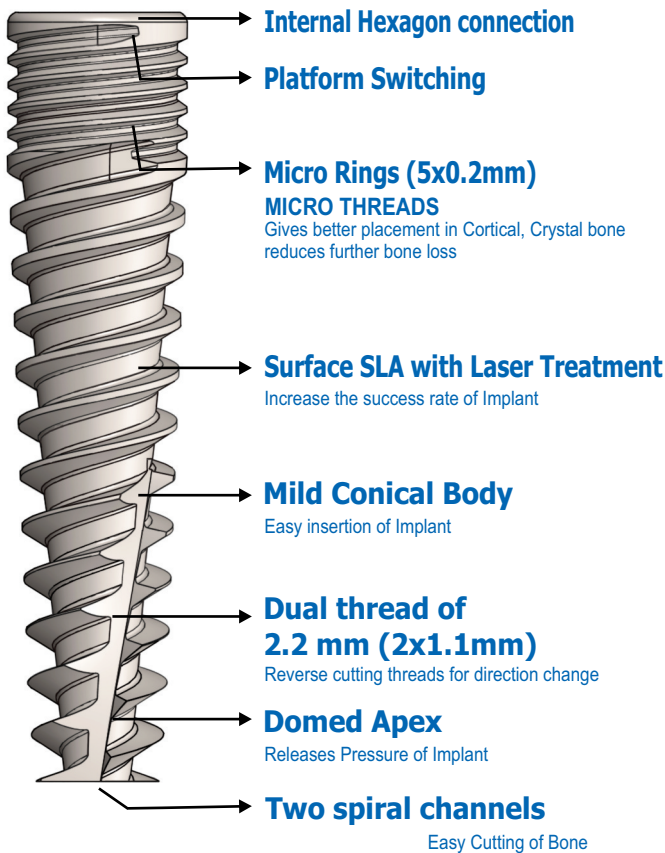


Scanning electron micrograph of sandblasted surface.



Implant surface at high magnification. No visible abnormal impurities.

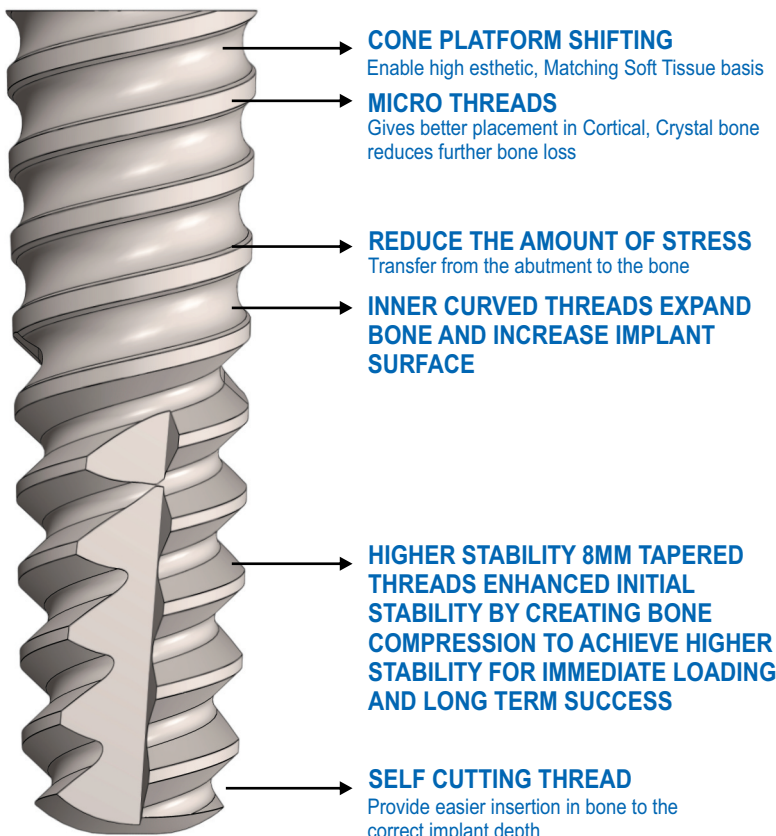
HEX IMPLANT



DSI HEX IMPLANT

Diameter	Length	Length	Length	Length	Length	Length
3.3 mm	—	8mm	10 mm	11.5 mm	13 mm	16 mm
3.75 mm	—	8mm	10 mm	11.5 mm	13 mm	16 mm
4.2 mm	6 mm	8mm	10 mm	11.5 mm	13 mm	16 mm
4.6 mm	6 mm	8mm	10 mm	11.5 mm	13 mm	16 mm
5.0 mm	6 mm	8mm	10 mm	11.5 mm	13 mm	16 mm
6.0 mm	6 mm	8mm	10 mm	11.5 mm	13 mm	16 mm

CONICAL IMPLANT



CSI PASSIVE IMPLANT

Diameter	Length	Length	Length	Length	Length	Length
3.65 mm	—	8mm	10 mm	11.5 mm	13 mm	16 mm
4.0 mm	6mm	8mm	10 mm	11.5 mm	13 mm	16 mm
4.5 mm	6mm	8mm	10 mm	11.5 mm	13 mm	16 mm
5.0 mm	6mm	8mm	10 mm	11.5 mm	13 mm	16 mm

CSI ACTIVE IMPLANT

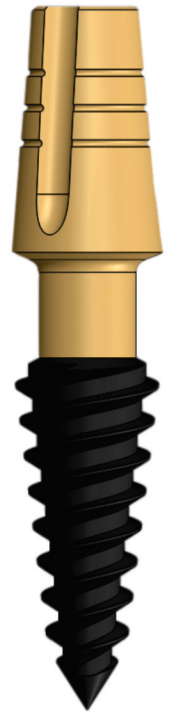
Diameter	Length	Length	Length	Length	Length	Length
3.65 mm	—	8mm	10 mm	11.5 mm	13 mm	16 mm
4.3 mm	6mm	8mm	10 mm	11.5 mm	13 mm	16 mm
5.0 mm	6mm	8mm	10 mm	11.5 mm	13 mm	16 mm
6.0 mm	6mm	8mm	10 mm	11.5 mm	13 mm	16 mm

COMPRESSIVE IMPLANT

SINGLE PIECE IMPLANT

Why COMPRESSIVE

- Minimum Drilling
- Immediate Loading
- Active Design
- SLA Surface Treatment
- Bendable Abutment
- Special Compressive Threads
- Anodisation For Better Results



COMPRESSIVE IMPLANT

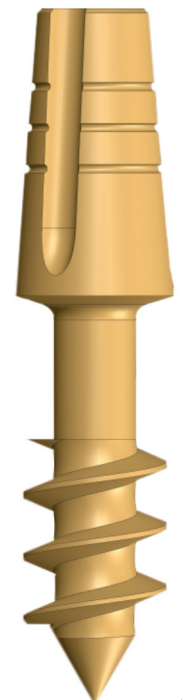
Diameter	Length	Length	Length	Length	Length	Length	Length	Length
3.3 mm	—	11.5 mm	13 mm	16 mm	18 mm	20 mm	22 mm	24 mm
3.75 mm	10mm	11.5 mm	13 mm	16 mm	18 mm	20 mm	22 mm	—
4.2 mm	8mm	10 mm	11.5 mm	13 mm	16 mm	18 mm	20 mm	—
5.0 mm	8mm	10 mm	11.5 mm	13 mm	16 mm	—	—	—
6.0 mm	8mm	10 mm	11.5 mm	13 mm	16 mm	—	—	—

BASAL IMPLANT

SINGLE PIECE IMPLANT

Why BICORTICAL

- Avoid Grafting
- Minimum Drilling
- Bendable Abutment
- Very Less Chances Of Perimplantitis
- Active Design
- Anodisation For Better Results
- Bone Implant High Contact



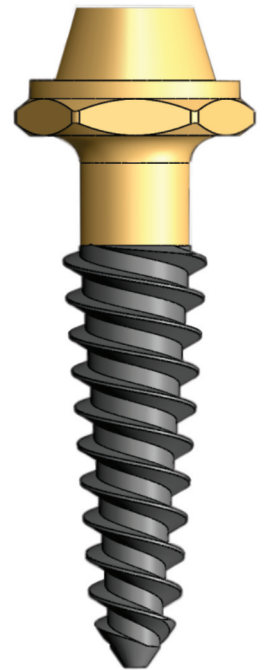
BCS IMPLANT

Diameter	Length	Length	Length	Length	Length	Length	Length	Length	Length	Length
3.5 mm	—	10 mm	12 mm	14 mm	17 mm	20 mm	23 mm	26 mm	29 mm	32 mm
4.5 mm	—	10 mm	12 mm	14 mm	17 mm	20 mm	23 mm	26 mm	29 mm	—
5.5 mm	8mm	10 mm	12 mm	14 mm	—	—	—	—	—	—
7.0 mm	8mm	10 mm	12 mm	14 mm	—	—	—	—	—	—

SCREW RETAINED SOLUTIONS

COMPRESSIVE MULTIUNIT IMPLANT

MU-Compressive Screw
With Cylinder Type
(Hex Collar Height 1.5mm)

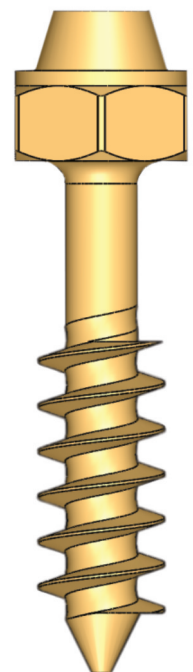


MU-COMPRESSIVE IMPLANT

Diameter	Length	Length	Length	Length	Length
3.75 (1.5mm)	10 mm	11.5 mm	13 mm	16 mm	18 mm
3.75 (3mm)	10 mm	11.5 mm	13 mm	16 mm	18 mm
4.2 (1.5mm)	10 mm	11.5 mm	13 mm	16 mm	18 mm
4.2 (3mm)	10 mm	11.5 mm	13 mm	16 mm	18 mm

BASAL MULTIUNIT IMPLANT

MU-BCS Screw Cylinder Type
(Hex Collar Height 3.0mm)



MU-BCS IMPLANT

Diameter	Length	Length	Length	Length	Length	Length
3.5 (1.5mm)	10 mm	12 mm	14 mm	17 mm	20 mm	23 mm
3.5 (3mm)	10 mm	12 mm	14 mm	17 mm	20 mm	23 mm

CIH IMPLANT

COMPRESSIVE INTERNAL HEX

WHY COMPRESSIVE INTERNAL HEX

- SCREW RETAINED PROSTHETIC OPTION
- Minimum Drilling
- Immediate Loading
- Active Design
- Special Compressive Threads
- Anodisation For Better Results
- SLA Surface Treatment



CIH HEX IMPLANT

COMPRESSIVE INTERNAL HEX

Diameter	Length	Length	Length	Length	Length	Length	Length	Length	Length
3.30 mm	8mm	10 mm	11.5 mm	13 mm	16 mm	18 mm	20 mm	22 mm	25 mm
3.75 mm	8mm	10 mm	11.5 mm	13 mm	16 mm	18 mm	20 mm	22 mm	25 mm
4.20 mm	8mm	10 mm	11.5 mm	13 mm	16 mm	18 mm	20 mm	22 mm	25 mm
5.00 mm	8mm	10 mm	11.5 mm	13 mm	—	—	—	—	—

CIH ANODISED IMPLANT

COMPRESSIVE INTERNAL HEX

Diameter	Length	Length	Length	Length	Length	Length	Length	Length	Length
3.30 mm	8mm	10 mm	11.5 mm	13 mm	16 mm	18 mm	20 mm	22 mm	25 mm
3.75 mm	8mm	10 mm	11.5 mm	13 mm	16 mm	18 mm	20 mm	22 mm	25 mm
4.20 mm	8mm	10 mm	11.5 mm	13 mm	16 mm	18 mm	20 mm	22 mm	25 mm
5.00 mm	8mm	10 mm	11.5 mm	13 mm	—	—	—	—	—

ODI-CONICAL IMPLANT

WHY OSSEODENSIFICATION IMPLANT



- SCREW RETAINED PROSTHETIC OPTION
- Minimum Drilling
- Immediate Loading
- Active Design
- Special Compressive Threads
- Anodisation For Better Results
- SLA Surface Treatment

ODI IMPLANT

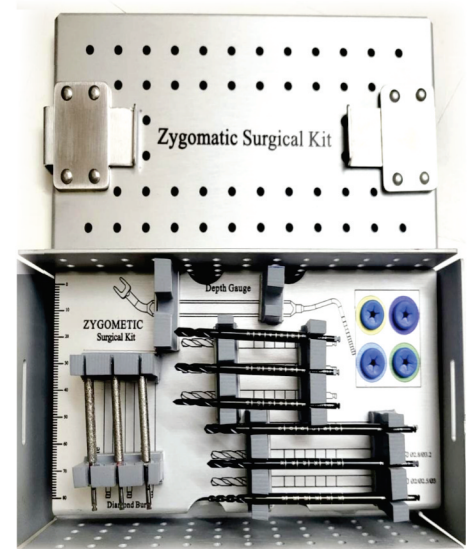
Diameter	Length	Length	Length	Length	Length	Length	Length	Length
3.65 mm	10 mm	11.5 mm	13 mm	16 mm	18 mm	20 mm	22 mm	25 mm
4.30 mm	10 mm	11.5 mm	13 mm	16 mm	18 mm	20 mm	22 mm	25 mm
5.00 mm	10 mm	11.5 mm	13 mm	16 mm	18 mm	20 mm	22 mm	25 mm

ZYGOMATIC IMPLANT

Zygomatic Implant With Multi Unit Abutment




- Zygomatic Cheekbone, Where These Longer Implant Are Anchored.
- All-On-4 Zygomatic Implant To Support Full Arch Of Teeth.
- Maxillary Atrophy.
- Osseointegration:
The Process Of The Implant Bonding With The Bone For Stability.




ZYGOMATIC HEX IMPLANT

Diameter	Length	Length	Length	Length	Length	Length	Length	Length	Length	Length	Length	Length	Length
4.0 mm	30 mm	32.5 mm	35 mm	37.5 mm	40 mm	42.5 mm	45 mm	47.5 mm	50 mm	52.5 mm	55 mm	57.5 mm	60 mm
4.5 mm	30 mm	32.5 mm	35 mm	37.5 mm	40 mm	42.5 mm	45 mm	47.5 mm	50 mm	52.5 mm	55 mm	57.5 mm	60 mm

 F-113, Street No.5, East Vinod Nagar, Delhi-110091

 www.impactimplant.com

 8383037139

Follow us :     